

SAB 2026

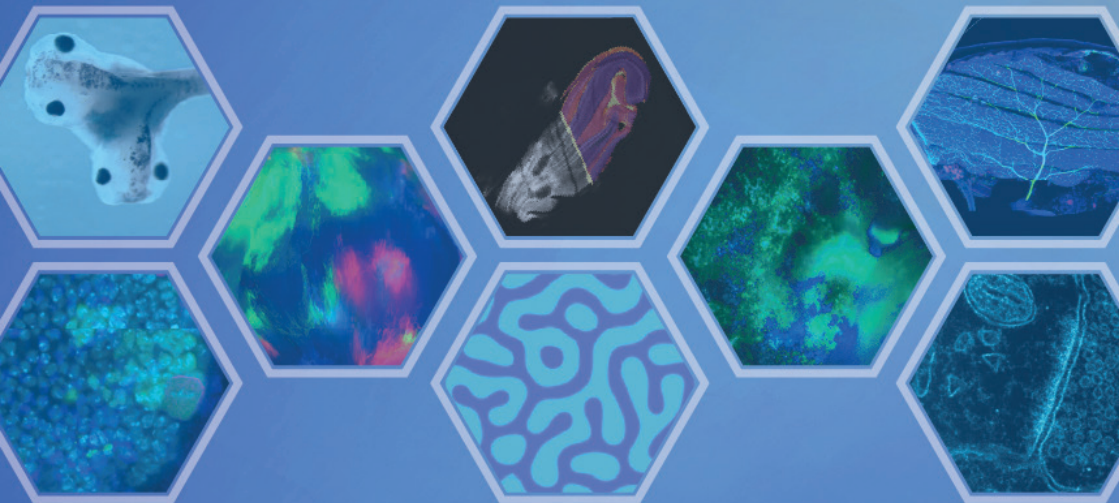
May 18 & 19

$$\Sigma = \eta_{cortex} L/L + \gamma \alpha(L)$$

$$(1 + t * \partial t) \sigma = \eta_{cortex} \nabla u + \sigma \alpha$$

Program

$$\Pi = \int_V \sigma_{ij} \epsilon_{ij} dV - \left(\int_V f_i u_i dV + \int_S p_i u_i dS \right)$$



$$\frac{\partial a}{\partial t} = F(a, i) - d_a a + D_a \Delta a$$

$$\frac{\partial i}{\partial t} = G(a, i) - d_i i + D_i \Delta i$$

$$\partial u / \partial t = D \nabla^2 u + f(u)$$



CENTURI

TURING CENTRE
FOR LIVING SYSTEMS



$$x' = f(x, u)$$

Monday 18th

- 09.15-09.45 General Presentation of CENTURI
by Thomas Lecuit
CIML Auditorium
- 09.45-10.15 Research Axis Presentation
by Tâm Mignot
CIML Auditorium
- 10.15-10.40 PhD Program Training Presentation
by Julia Schaeffer & Emily Gehrels
CIML Auditorium
- 10.40-11.10 Coffee break | **CIML Terrace**
- 11.10-11.40 Master's Degrees Presentation
by Florence Hubert & Pierre Recouvreux
CIML Auditorium
- 11.40-12.15 MEP Presentation
by Rosa Cossart
CIML Auditorium
- 12.15-13.45 Lunch Break | **CIML Terrace**
- 13.45-16.15 CENTURI PIs Presentation
Closed session
- 16.30-18.00 CENTURI PhD & Postdocs Presentation
Closed session

Tuesday 19th

09.15-10.30 MEP Presentation
by Thomas Vannier & Mathias Lechelon
Closed session

10.30-10.45 Coffee break | **CIML Terrace**

10.45-11.05 Presentation of CENTURI Student Life
by Soichi Hirokawa & Alessandro Chiappori
CIML Auditorium

11.05-11.30 Presentation of CENTURI Life and Events
by Bianca Haberman, Léo Guignard & Philippe Roudot
CIML Auditorium

11.30-12.00 Presentation of CENTURI 2.0
by Thomas Lecuit
CIML Auditorium

12.00-13.45 Lunch Break | **CIML Terrace**



CENTURI

TURING CENTRE
FOR LIVING SYSTEMS